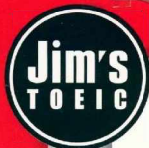




CK.0000064487



1000

Jim Lee

Listening Comprehension

Practice Test Items

For the **New TOEIC Test**

SÁCH KÈM THEO ĐĨA CD ĐẶT TẠI

PHÒNG NGHE NHÌN



MP3 CD

GUYỄN
LIÊU



NHÀ XUẤT BẢN TỔNG HỢP
THÀNH PHỐ HỒ CHÍ MINH

NTV

Công ty TNHH
Nhân Trí Việt

95635

428
LEE

JIM'S TOEIC

1000

Listening Comprehension
Practice Test Items
for the New TOEIC Test

ĐẠI HỌC THÁI NGUYÊN
TRUNG TÂM HỌC LIỆU



NHÀ XUẤT BẢN TỔNG HỢP
THÀNH PHỐ HỒ CHÍ MINH

NTV

Công ty TNHH
Nhân Trí Việt

JIM'S TOEIC

1000 Listening Comprehension Practice Test Items for the New TOEIC Test

Copyright © 2007-2013 Darakwon, Inc.

Published in Vietnam, 2014

This edition is published in Vietnam under a license Agreement between Darakwon Inc., Korea and Nhan Tri Viet Co., Ltd. Vietnam through Imprima Korea Agency.

All rights reserved. No part of this publication may be reproduced, stored in a retrieval system, or transmitted, in any form or by any means, electronic, mechanical, photocopying, recording, or otherwise, without the prior written permission of the copyright owners.

Contents

Test 01	05
Test 02	19
Test 03	33
Test 04	47
Test 05	61
Test 06	75
Test 07	89
Test 08	103
Test 09	117
Test 10	131

TEST

01

Jim's TOEIC

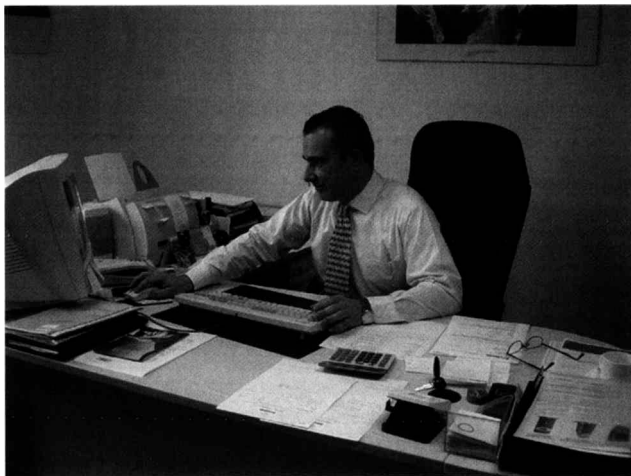
LISTENING TEST

In the Listening test, you will be asked to demonstrate how well you understand spoken English. The entire Listening test will last approximately 45 minutes. There are four parts, and directions are given for each part. You must mark your answers on the separate answer sheet. Do not write your answers in the test book.

PART 1

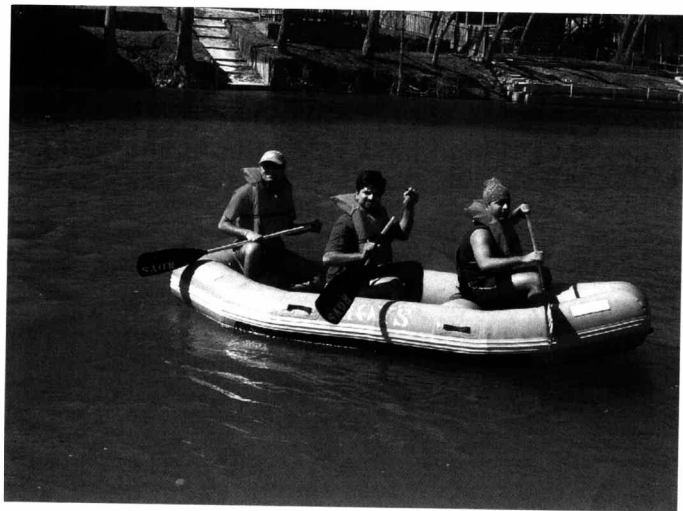
Directions: For each question in this part, you will hear four statements about a picture in your test book. When you hear the statements, you must select the one statement that best describes what you see in the picture. Then find the number of the question on your answer sheet and mark your answer. The statements will not be printed in your test book and will be spoken only one time. Look at the example item below.

Example



Statement (B), "The man is working at the desk." is the best description of the picture, so you should select answer (B) and mark it on your answer sheet.

1.



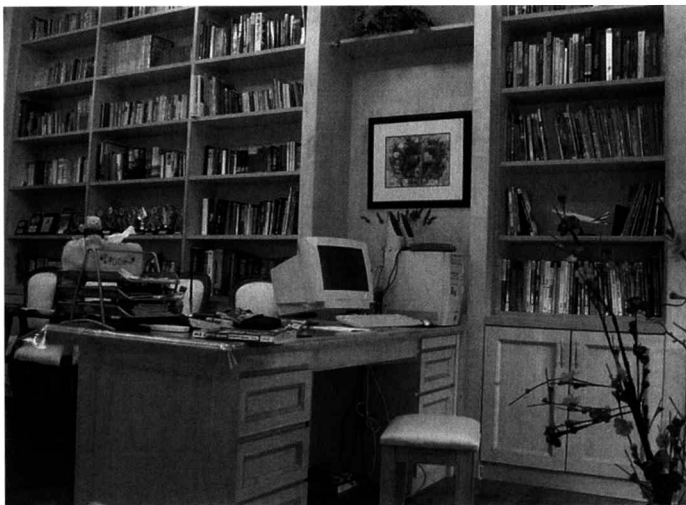
TEST
01

2.



GO ON TO THE NEXT PAGE 

3.



4.

